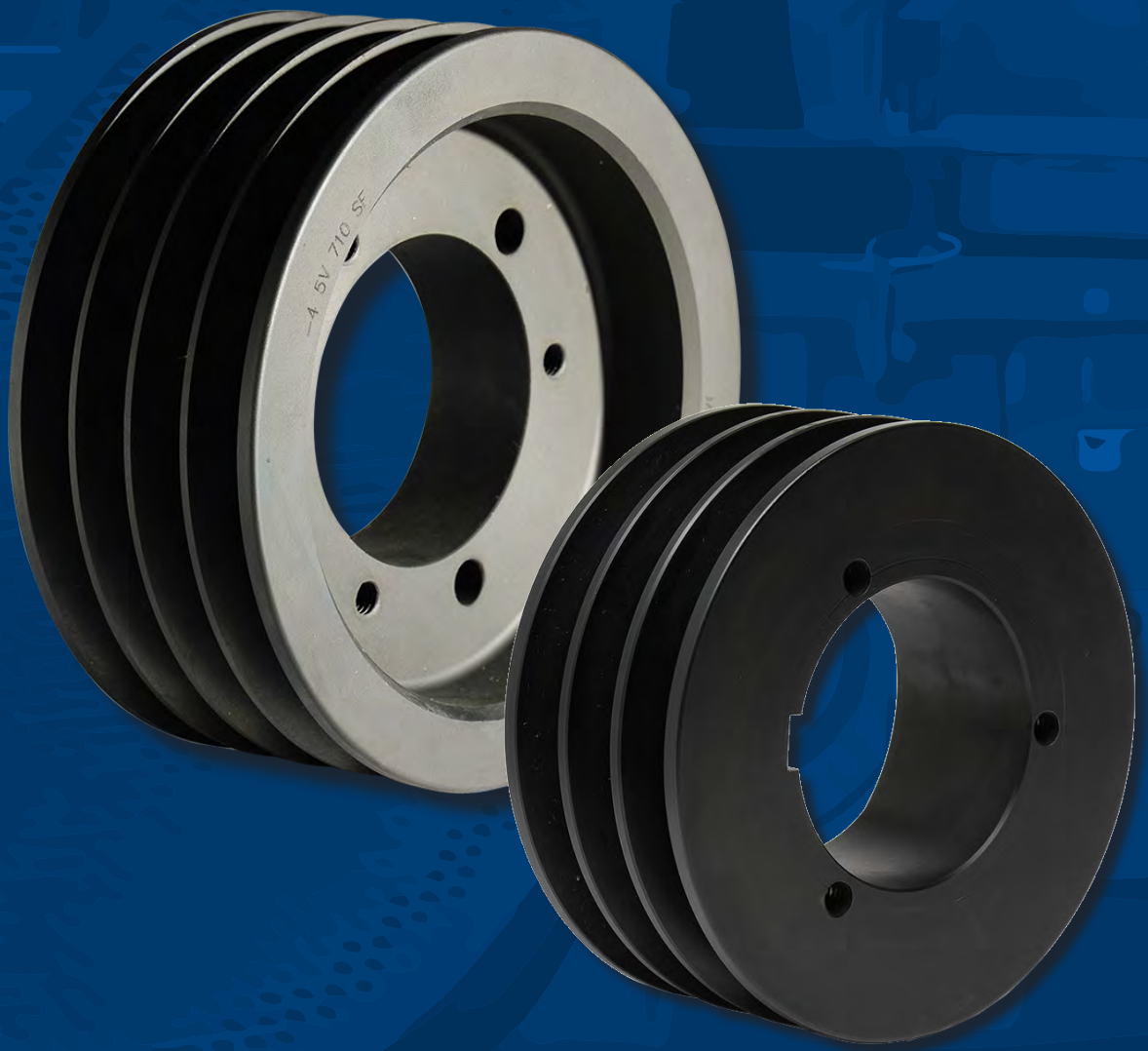


# Martin

## V-BELT SHEAVES

HI-CAP® WEDGE  
CONVENTIONAL  
VARIABLE PITCH  
FRACTIONAL HORSEPOWER



[www.DISROD.com](http://www.DISROD.com)

*Martin* offers reliable V-belt Sheaves to keep your belt drives running smoothly. *Martin* Sheaves are stocked in a range of Bushing types or groove styles to meet any light or heavy-duty application.

*Martin* carries the largest inventory of stock Sheaves and can manufacture Made-to-Order Sheaves quickly and efficiently to meet the shortest of turnarounds. When it comes to high-quality Sheaves made from North American steel, *Martin* is the one you rely on.



**Harvesting**



**Pulp & Paper**



**Aggregates**



**Food & Beverage**



**Oil & Gas**



**Automotive**

### MTO Capabilities



- **Special Materials**

- Aluminum
- Brass
- Ductile Iron
- Cast Iron
- Steel
- Stainless Steel

- **Poly V Sheaves**

- **E Section Conventional Sheaves**

- **Idler Wheels**

- **Flat Pulleys**

- **Fly Wheels**

- **Wire Rope Pulleys**

- **Crusher Duty**

- **Deep Groove**

- **Finished Bore**

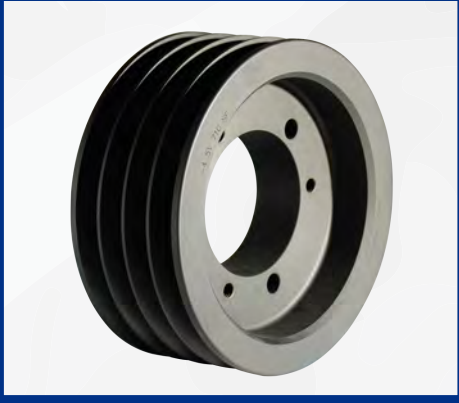
- **Special Bore or Bushings**

- **Precision machined grooves**

- **Static or Dynamic Balancing**

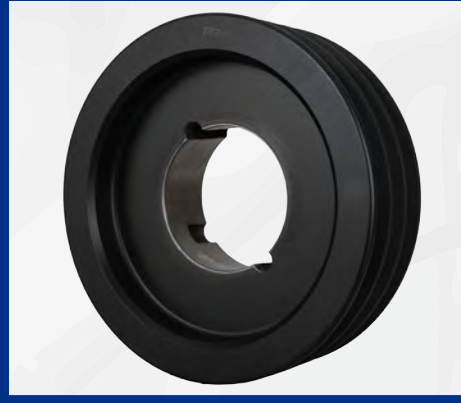


## QD V-Belt Sheave



- **Hi-Cap® Wedge** – Stocked for 3V, 5V & 8V Belts
- **Conventional** – Stocked for A, B, C & D Belts
- **Available in 1 to 12 groove configurations**
- **Statically balanced** (Dynamic balancing available)
- **Detachable Bushing for easy installation & maintenance**

## Taper Bushed V-Belt Sheave



- **Hi-Cap® Wedge** – Stocked for 3V, 5V & 8V Belts
- **Conventional** – Stocked for A, B, C & D Belts
- **Available in 1 to 12 groove configurations**
- **Statically balanced** (Dynamic balancing available)
- **Clean & compact Bushing**

## MST® V-Belt Sheave



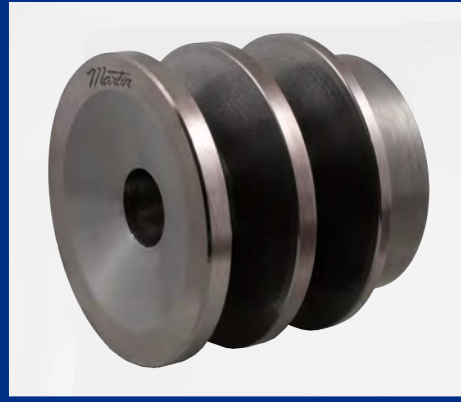
- **Hi-Cap® Wedge** – Stocked for 3V, 5V & 8V Belts
- **Conventional** – Stocked for A, B, C & D Belts
- **Available in 1 to 12 groove configurations**
- **Statically balanced** (Dynamic balancing available)
- **Easy blind installation**

## Combination V-Belt Sheave



- **Grooved to run A Section or B Section V-Belts**
- **Available with QD, Taper Bushed, or MST® Bushing**
- **Precision machined grooves**
- **Statically balanced** (Dynamic balancing available)

## FHP V-Belt Drive



- **Fractional Horsepower Sheaves for light duty applications**
- **Available in single & double groove designs**
- **Available Bored-to-Size and MST® Bushed**
- **Precision machined grooves**
- **Statically balanced** (Dynamic balancing available)

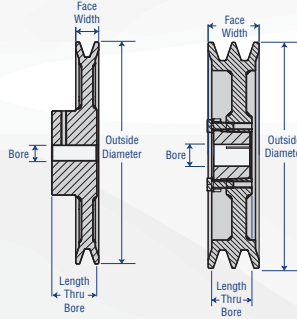
## Variable Pitch V-Belt Sheave



- **Stationary adjustable speed Sheaves**
- **Available in single & double groove designs**
- **Full range of popular bore sizes including keyway and setscrew**
- **Positive locking system**
- **Precision machined grooves**
- **Statically balanced** (Dynamic balancing available)

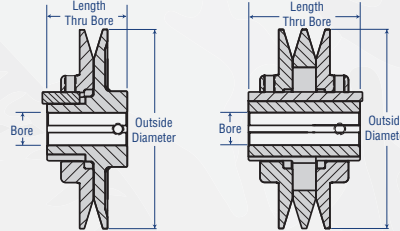
**FHP FRACTIONAL HORSEPOWER**

# of Grooves **2 AK 104 3/4** **Bore or Bushing**  
 If not listed, sheave is a single groove  
 Bore in Inches  
 MST® "H" Bushing  
**Belt Selection** **Approximate OD**  
 AK 3L, 4L, A Section  
 BK 4L, 5L, A, B Section  
 1 decimal point: 10.4"



**VP VARIABLE PITCH**

# of Grooves **1 VP 68 1 3/4** **Bore**  
 Inches  
**Variable Pitch** **Approximate OD**  
 Belt Selection:  
 3L, 4L, 5L, A, B, 5V Section  
 1 decimal point: 6.8"



**General Balancing Guidelines**

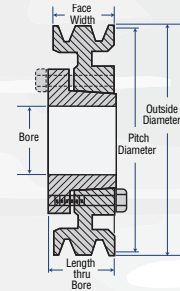
- 5,000 FPM & Less: Cast Iron, Static Balance (*Martin* Stock Sheaves)
- 5,000 FPM to 6,500 FPM: Cast Iron, Dynamic Balance (*Martin* Stock Sheaves)
- 6,501 FPM and Over: Ductile Iron or Steel, Dynamic Balance
- Contact *Martin* for specific application assistance

**HIGH CAPACITY SHEAVE**

# of Grooves **2 3V 220 JA**  
**Belt Selection**  
 3V, 5V, 8V  
**Outside Diameter**  
 2 decimal points: 2.20"  
**Bushing**

**QD CONVENTIONAL SHEAVE**

**12 D 580 P** **Bushing**  
**Pitch Diameter**  
 1 decimal point: 58.0"  
**Belt Selection**  
 A, B, C, D  
**# of Grooves**

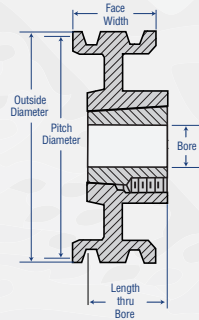


**HIGH CAPACITY SHEAVE**

# of Grooves **10 8V 3000 TB**  
**Belt Selection**  
 3V, 5V, 8V  
**Outside Diameter**  
 2 decimal points: 30.00"  
**Bushing**

**TB CONVENTIONAL SHEAVE**

**1 B 34 TB** **Bushing**  
**Pitch Diameter**  
 1 decimal point: 3.4"  
**Belt Selection**  
 A, B, C, D  
**# of Grooves**

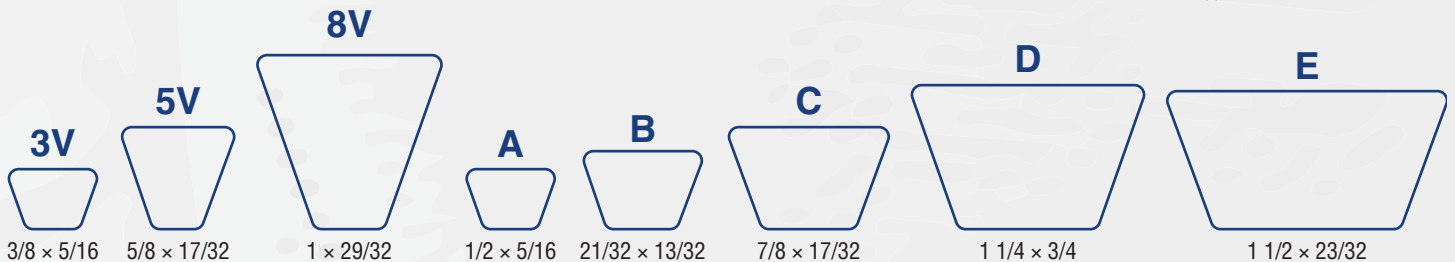
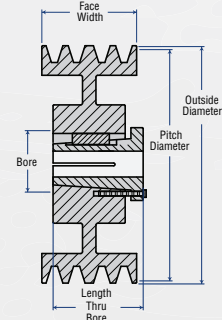


**HIGH CAPACITY SHEAVE**

# of Grooves **1 3V 300 G**  
**Belt Selection**  
 3V, 5V, 8V  
**Outside Diameter**  
 2 decimal points: 3.00"  
**Bushing**

**MST® CONVENTIONAL SHEAVE**

**10 C 140 R** **Bushing**  
**Pitch Diameter**  
 1 decimal point: 14.0"  
**Belt Selection**  
 A, B, C, D  
**# of Grooves**



*Martin* carries the most complete line of Bushings in the Power Transmission industry. With Bushings stocked in more than 32 North American Branches and quick Made-to-Order turnaround times, *Martin* is the source to rely on for interchangeable Bushings.

• **Always in Stock**

- QD Bushings for conventional or reverse mounting
- Taper Bushed Bushings for flush mounting
- MST® Bushings keyed to the shaft and hub for "blind" installation
- Available from Inventory or Made-to-Order for special applications

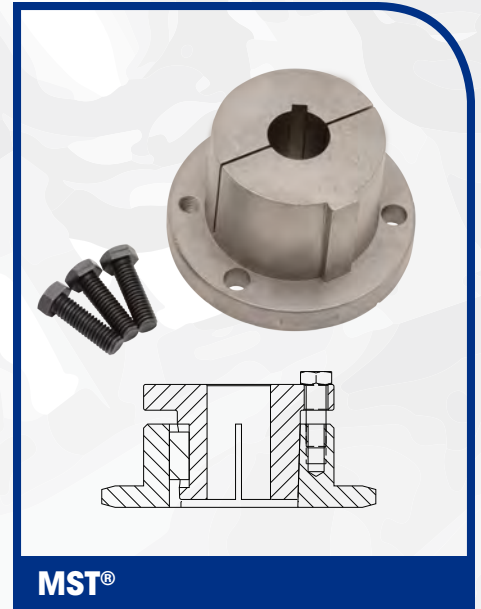
Characteristics	MST® <i>Martin</i> Split Taper	QD Quick Detachable	TB Taper Bushed
<b>Stock Bore Range</b>	3/8" – 7 7/16"	3/8" – 10"	1/2" – 12"
<b>Taper on Barrel*</b>	3/4 in/ft	3/4 in/ft	1.678 in/ft
<b>Material</b>	Iron, Steel	Iron, Steel, Stainless	Iron, Steel, Stainless
<b>Reverse Mount Capability</b>	No	Yes (Thru "J")	No
<b>Flange</b>	Yes	Yes	No
<b>External Key</b>	Yes	No	No
<b>Split</b>	Double through barrel only	Single through whole Bushing	Single through whole Bushing
<b>Interchangeability of Bushing Styles**</b>	None	None	None

\* Definition: Barrel - The portion of the Bushing extending from the flange to the end.

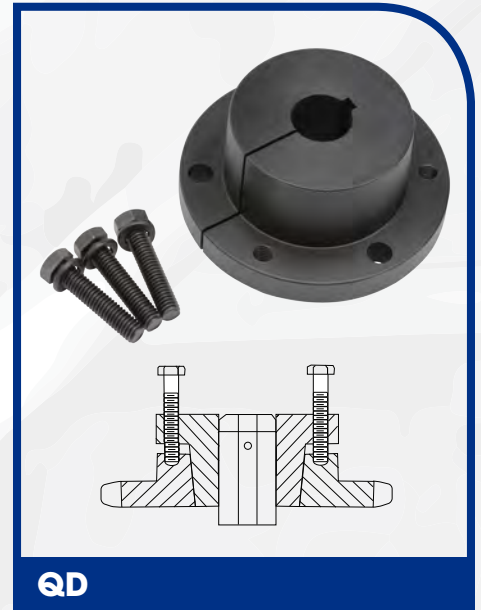
\*\* Note: Bushing styles are not interchangeable (Example: QD must be used with QD products, TB must be used with TB products, etc.), but each type is interchangeable with the same type made by other manufacturers.

Bushing Style	Basic Part Description (followed by bore size.):
MST®	G, H, P1, P2, P3, Q1, Q2, Q3, R1, R2, S1, S2, U0, U1, U2, W1, W2
QD	JA, SH, SDS, SD, SK, SF, E, F, J, M, N, P, W, S
TB	1008, 1108, 1210, 1215, 1310, 1610, 1615, 2012, 2517, 2525, 3020, 3030, 3525, 3535, 4030, 4040, 4535, 4545, 5040, 5050, 6050, 7060, 8065, 10085, 120100.

**WARNING: USE OF ANTI-SEIZE LUBRICANT ON TAPERED CONE SURFACES OR ON BOLT THREADS WHEN MOUNTING MAY RESULT IN DAMAGE TO SHEAVES AND SPROCKETS. THIS VOIDS ALL MANUFACTURERS' WARRANTIES.**



**MST®**



**QD**



**Taper**

Sheaves should be checked for wear every time you change a belt!

Free Sheave Gauges available at your local *Martin* Branch

Indications of Sheave wear include:

- Belts are turning over
- Belts wear out faster than normal
- Belts are "bottoming" out
- Belt dressing is used to quiet drive (not enough tension or worn grooves)
- Belts appear to be "mismatched"

If wear is present, replace them with *Martin* Sheaves.



**WARNING**  
When performing any type of inspection / maintenance, always observe proper safety procedures. ALWAYS LOCK OUT / TAG OUT POWER!

*Martin* offers:

- Instant availability QD, MST® and Taper Bushed
- The best MTO capability - cast iron, ductile and steel
- Expertise in personnel to assist your efforts
- Complimentary Sheave Gauges available for customer inspection



Free Download  
Maintenance and Troubleshooting Guide  
[www.martinsprocket.com/vbeltguide](http://www.martinsprocket.com/vbeltguide)



For more information contact a branch near you:

USA		MEXICO
Corporate Offices Sales & Manufacturing ARLINGTON, TX 817-258-3000 (FAX 817-258-3333)	Branch Manufacturing Plants BOSTON, MA 508-634-3990 (FAX 508-634-3998) CHARLOTTE, NC 704-394-9111 (FAX 704-394-9122) CHICAGO, IL 847-298-8844 (FAX 847-298-2967) DENVER, CO 303-371-8466 (FAX 303-371-7116) HOUSTON, TX 713-849-4330 (FAX 713-849-4807) KANSAS CITY, MO 816-231-5575 (FAX 816-231-1959)	GUADALAJARA, JAL +52 33-3283-1188 (FAX +52 33-3271-8450) MONTERREY, N.L. +52 811 156 6830 (FAX +52 81-1156-6833) TOLUCA, MEX +52 722 276 0800 (FAX +52 722-276-0801)
Regional Manufacturing Plants ALBEMARLE, NC 704-982-9555 (FAX 704-982-9599) ATLANTA, GA 404-292-8744 (FAX 404-292-7771) BURLESON, TX 817-295-7151 (FAX 817-447-3840) DANIELSVILLE, PA 610-837-1841 (FAX 610-837-7337) FT. WORTH, TX 817-258-3000 (FAX 817-258-3173) MONTPELIER, OH 419-485-5515 (FAX 419-485-3565) SACRAMENTO, CA 916-441-7172 (FAX 916-441-4600)	Manufacturing Only Abilene, TX Clarksville, TX Dallas, TX Mansfield, TX Paragould, AR	<b>BRAZIL</b> SÃO PAULO, SP +55 19 3877 9400 (FAX +55 19-3877-9429)
	<b>CANADA</b> CAMBRIDGE, ONTARIO 519-621-0546 (FAX 519-621-4413) EDMONTON, ALBERTA 780-450-0888 (Fax 780-465-0079) MISSISSAUGA, ONTARIO 905-670-1991 (FAX 905-670-2110)	

